

中鋼機械  
股份有限公司

CHINA  
STEEL  
MACHINERY  
CORPORATION



中 鋼 機 械



# 目錄

## Content



- 4 公司簡介  
Company Profile
- 8 品質保證  
Quality Assurance
- 11 中鋼機械組織圖  
Organization Chart
- 12 工程能力  
Engineering Capability

### 主要業務 Products and Services

- 14 鋼鐵廠設備  
Steel Plant
- 18 碼頭輸送設備  
Wharf Material Handling System
- 20 天車與起重設備  
Crane & Lifting System
- 22 輸送帶設備  
Conveyors
- 24 電廠設備  
Power Plant
- 26 風力發電  
Wind Power

30	軌道車輛工程 Rolling Stock
34	轉向架框 Bogie Frame
36	水利工程 Hydraulic Engineering
38	儲槽與壓力容器 Tank and Pressure Vessel
40	鑄件 Casting

## 製造廠介紹 Introduction of Heavy Machine Works

44	鑄造場 Foundry Shop
46	冷焊工場 Fabrication Shop
48	機械加工及量具室 Machining & Measuring Implements Room
50	組裝工場與碼頭後線 Assembly Workshop and Wharf Hinterland
52	液壓缸製造維修及測試中心 Hydraulic Cylinder Manufacturing, Maintenance and Testing Center
53	輾輪再生 Roll Reclamation
54	主要設備清單 List of Main Facilities
60	廠區平面圖 Plant Layout



# 公司簡介

## Company Profile

### 公司發展歷程

中鋼機械隸屬中鋼集團，為中國鋼鐵股份有限公司轉投資公司，於 2001 年 9 月 20 日承接「台灣機械股份有限公司」重機廠後成立，負責集團重型設備製造、安裝、試車與維修，目前資本總額為新台幣壹拾陸億元整。

中鋼機械以技術為本，強調訓練普及、職災歸零、風險最低化和控制最佳化的安全衛生政策，導入專案管理模式，朝 EPC 技術整合邁進。



中鋼機械廠區鳥瞰圖 Aerial view of the CSMC plant area



## Company Development History

Established on September 20, 2001, China Steel Machinery Corporation (CSMC) is a subsidiary of China Steel Corporation. CSMC undertook the heavy machinery department of the former Taiwan Machinery Co., Ltd. and CSMC endeavors to provide the services of manufacture, construction, commissioning and maintenance in CSC Group. The current total capital is NTD 1.6 billion.

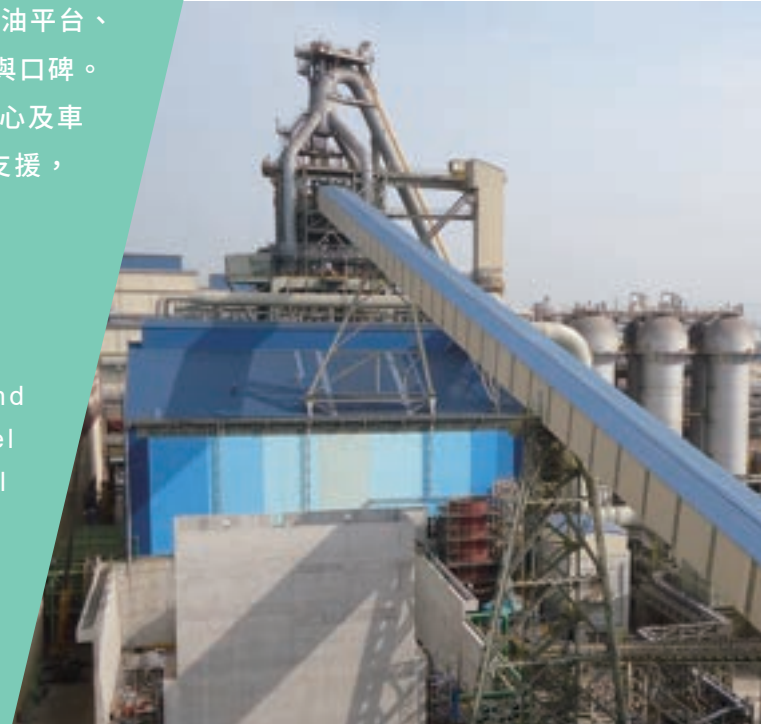
With technological essentials, CSMC persist in the safety and health policies via thorough training, zero occupational disasters, risk minimization and control optimization, introducing project management models that lead to the integration of Engineering/ Procurement/ Construction (EPC) technologies.

## 業務簡介

中鋼機械在一貫作業鋼廠、軌道車輛、風力發電、鑽油平台、輸送系統、電廠、抽水站、鑄件等領域皆有出色的實績與口碑。隨著業務成長和核心產品產能需求。設立專業油壓缸中心及車輛轉向架製造中心。近年來更經由母公司技術移轉與支援，朝工程整合與設計專業發展。

## Business Lines

CSMC possesses outstanding performance and good reputation in the field of Integrated steel plant, Rolling Stock, Wind Power, Oil rigs, Material handling system, Power plant, Pumping station, castings, etc. As sales and productivity demands for core products continue to grow, CSMC established the proprietary Hydraulic Cylinder Center and Bogie Frame Manufacturing Center. In recent years, CSMC has developed engineering integration and professional design under technology transfer supported by CSC.



中龍二號高爐本體製作及設備安裝  
DSC No.2 Blast Furnace body fabrication and construction

彰化芳苑台電離岸風力發電測風塔

Anemometer tower of TPC Changhua Fang-Yuan offshore wind power project.



## 未來展望

中鋼機械配合中鋼集團國際化、多角化的經營方向，已發展為中鋼集團的設計及製造中心；未來將逐步整合工程設計及規畫能力，創立中鋼機械品牌價值，提供客戶優質的服務與優良的產品。

## Outlook

As the CSC Group globalizes for business versatility, CSMC has developed itself into the designing and manufacturing center of CSC Group. It will gradually integrate engineering and planning capabilities in the future, creating brand value for CSMC and providing clients with quality services as well as state-of-the-art products.



陸域風機塔架  
Onshore wind turbine tower sections



中龍熱軋設備製造及安裝  
DSC Hot Strip Mill equipment supply and construction.



日本電廠用連續式卸船機  
1,500 T/H CSU for Thermal power plant in Japan

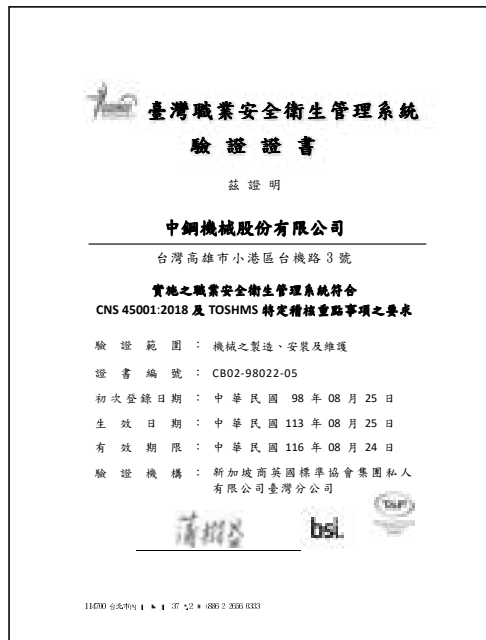
# 品質保證

## Quality System & Certification



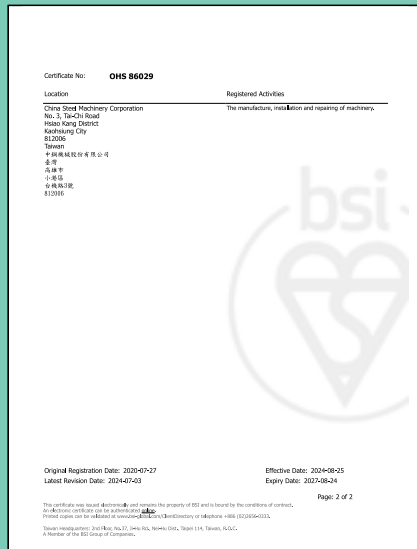
ISO9001 : 2015 證書

ISO9001 : 2015 Quality Management System



CNS 45001 : 2018 台灣職業安全衛生管理系統證書

CNS 45001 : 2018 Occupational Health and Safety Management System



ISO 45001 : 2018 證書

ISO 45001 : 2018 Occupational Health and Safety Management System



ISO/IEC 27001:2022 資訊安全驗證證書

ISO/IEC 27001 : 2022 Information Security Management Systems



ISO 3834.2 : 2021 銲接管理系統證書

ISO 3834.2 : 2021 Quality Management System



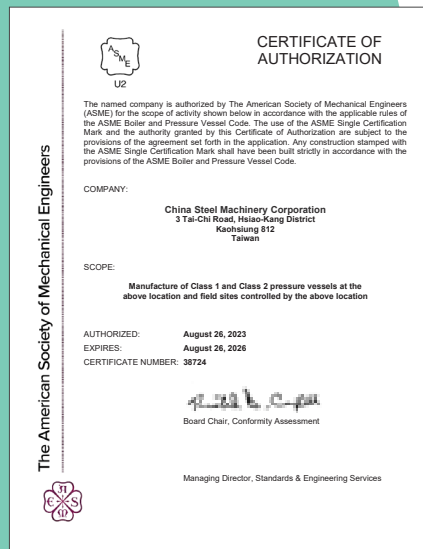
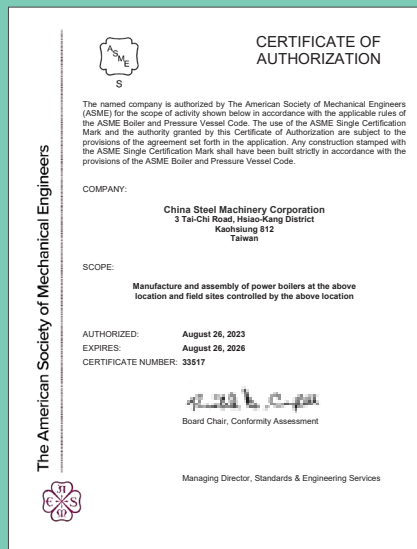
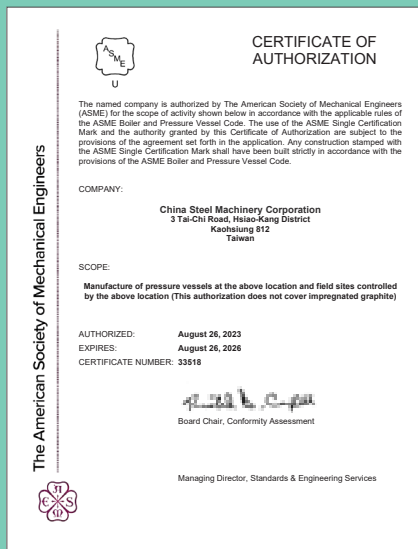
EN 1090-1 / EN 1090-2 鋼結構品質標準

EN 1090-1 / EN 1090-2 European Standards 1090 Part 1 : Requirements for conformity assessment for structural components / Part 2 : Technical requirements for the execution of steel structures



R 合格證書

The National Board of Boiler and Pressure Vessel Inspectors R

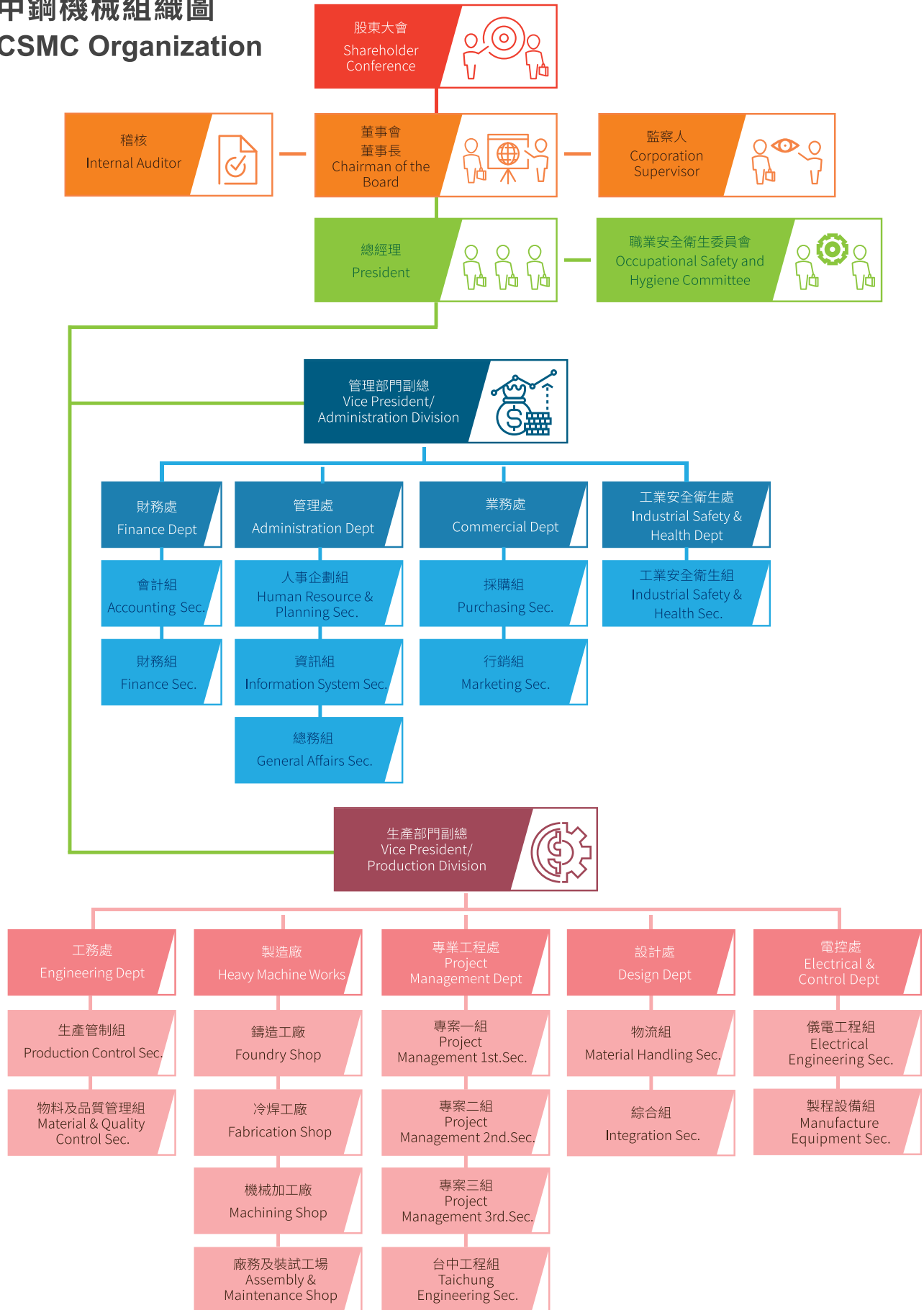


壓力容器許可製造合格證書 The American Society of Mechanical Engineers (ASME) U Stamp

鍋爐許可製造合格證書 The American Society of Mechanical Engineers (ASME) S Stamp

高壓壓力容器許可製造合格證書 The American Society of Mechanical Engineers (ASME) U2 Stamp

# 中鋼機械組織圖 CSMC Organization



# 工程能力

## Engineering Capability

中鋼機械導入專案管理系統，整合設計、採購及施工，結合上下游供應鏈，提供業主完整的服務。已完成：鋼廠整廠天車、集塵系統、電廠輸送系統、鋼板強力冷整平機、高爐氣儲槽更新、電廠循環水泵及附屬設備、水淬爐石研磨產線等專案。

By introducing the Project Management System and Integration of Engineering, Procurement and Construction (EPC), CSMC has combined the upstream and downstream supply chains to provide clients with comprehensive services. Accomplished EPC projects include: Crane of entire steel plant, Dust Collection System, Power Plant Conveying System, High-power Steel Plate Cold Leveler, Blast Furnace Gas holder, Power Plant Circulation Water Pump with accessories, steel slags pulverization line, etc.

中鋼高爐氣儲槽 CSC BF Gas holder



林口電廠輸煤系統  
Lin Kou Power Plant Coal Conveying System